

for Chelsea Miller

# Freda's Voice

for violin, viola, cello, and piano

VIOLA

ROBERT G. PATTERSON (2020)

**Somber** (♩=50) *sul tasto* *ord. 3*

6 *pp* *ppp* *p* *pp*

*pp* *p* *pp* *p* *bring out*

11 *poco accel.* *rit.* **Introspective** (♩=66) *pizz.*

*mp* *ppp* *p* *ppp*

15 **Somber** (♩=50) *arco* *mf* *pp*

19 *mf* *ppp* *sul tasto* *rit.* *ord.* (♩=♩) **Faster** (♩=72) *p*

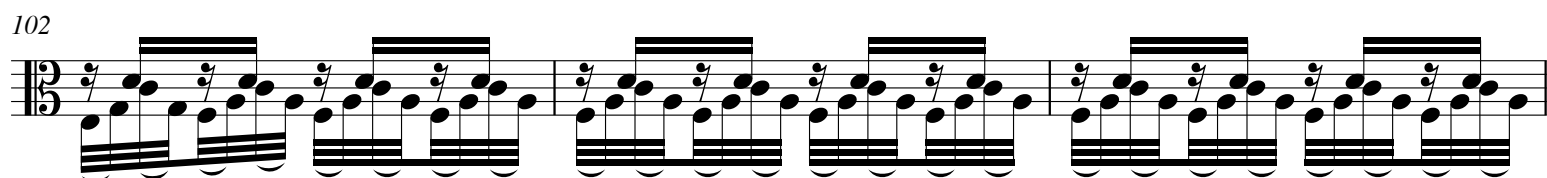
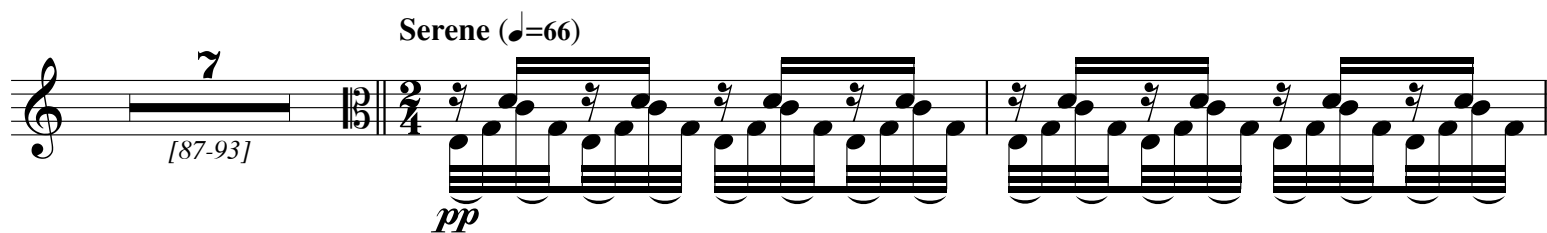
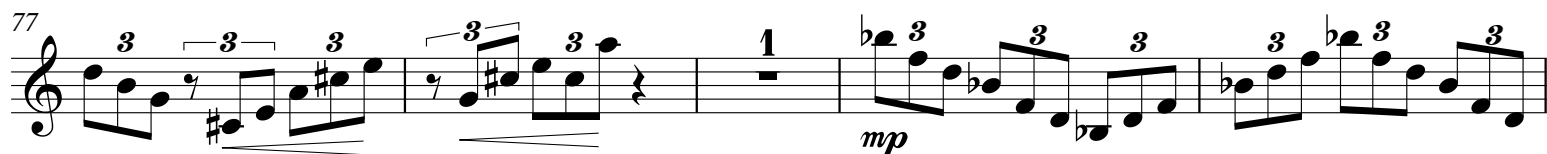
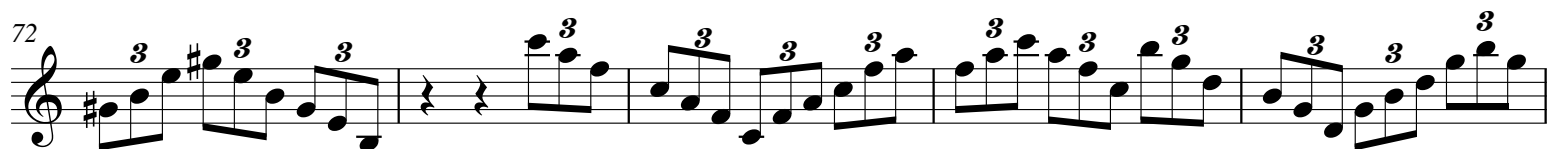
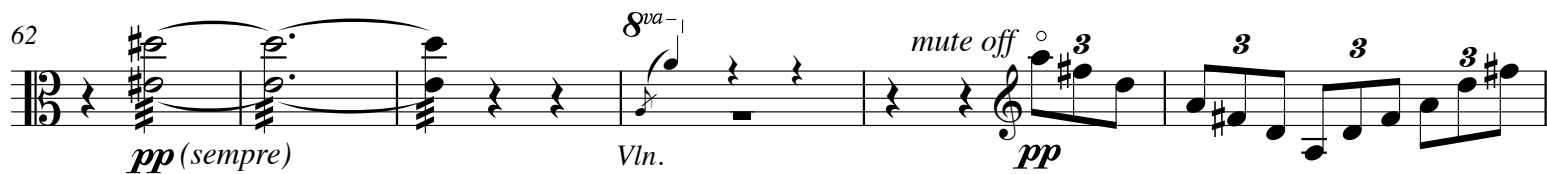
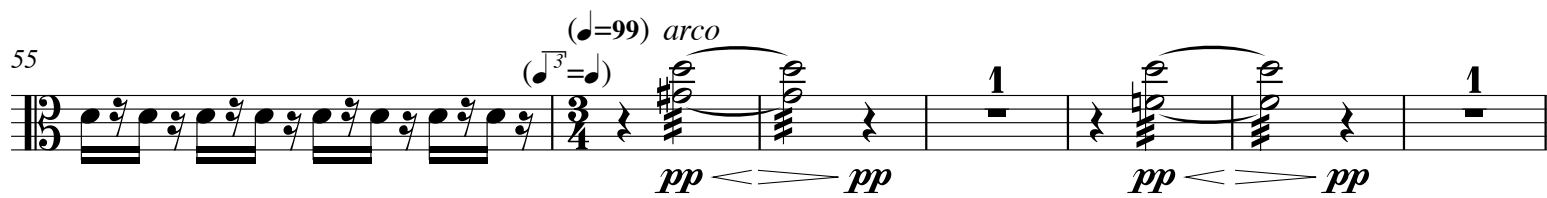
24 *molto rit.* **Introspective** (♩=66) *pizz.* *mf* *ppp*

28 *solo arco* *p* *mp*

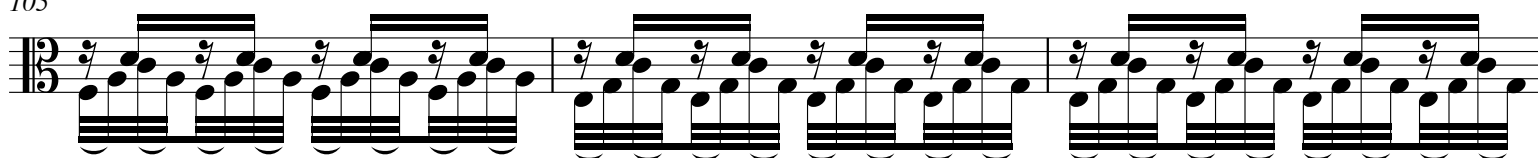
32 *p* *mp*

37-38 *mp* *Vlc.* *3*

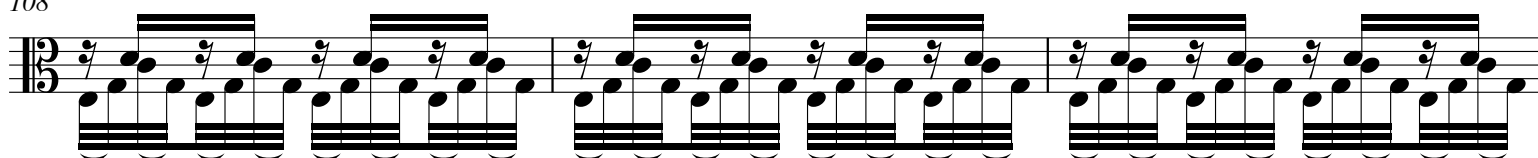
43 **Forward** (♩=99) *muted* *pp* *pp* *pp* *pp* *pp* *pp*

52 (♩=66) *pizz.*

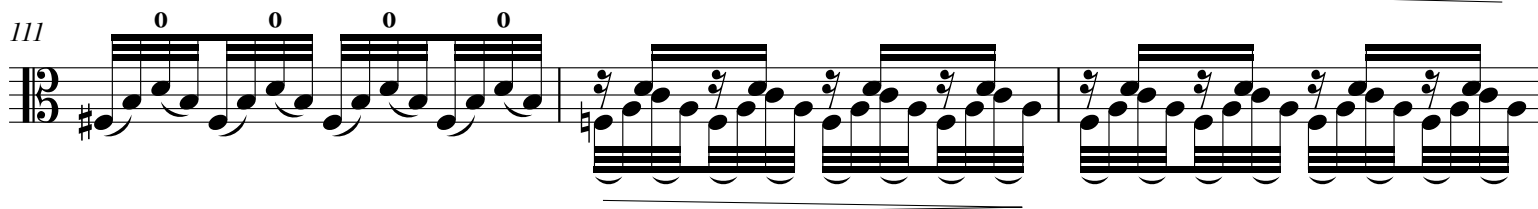
105



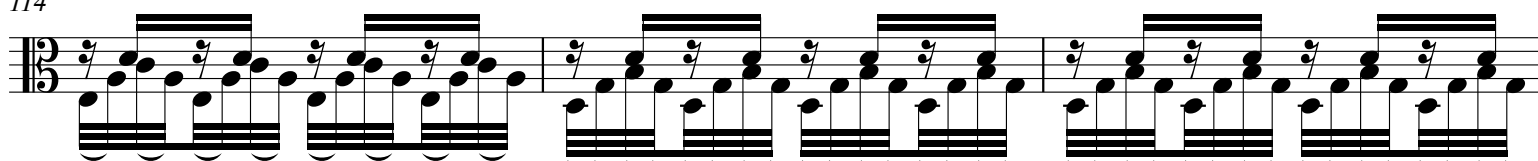
108



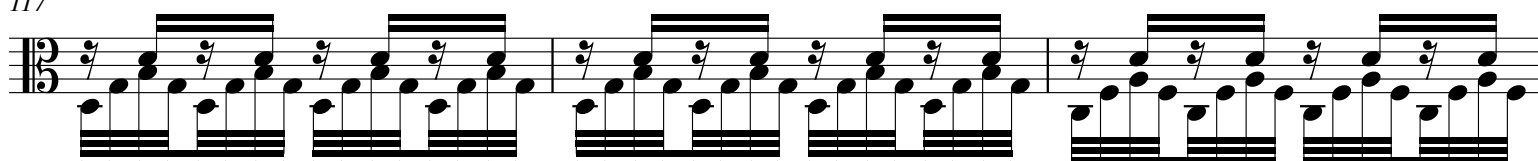
111



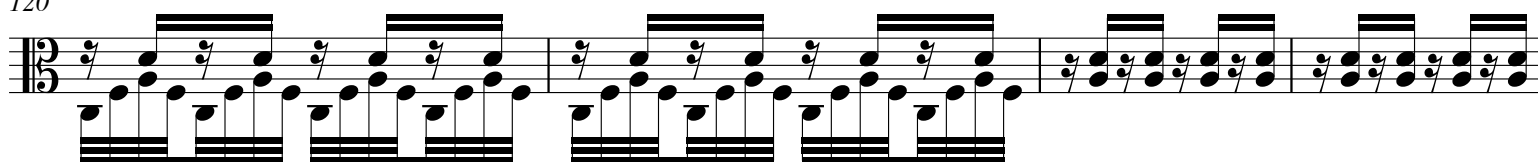
114



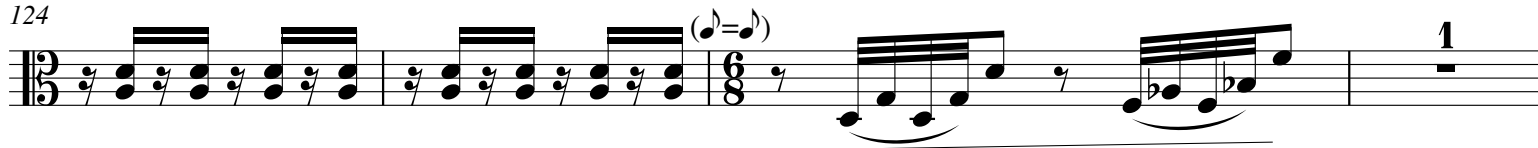
117



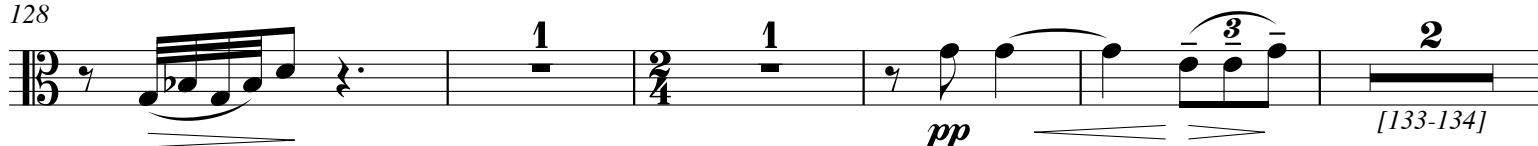
120



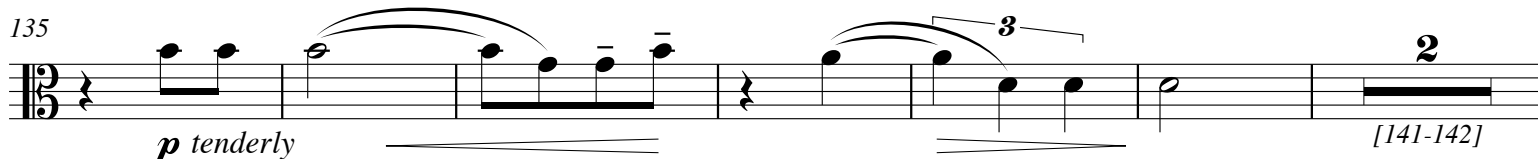
124



128



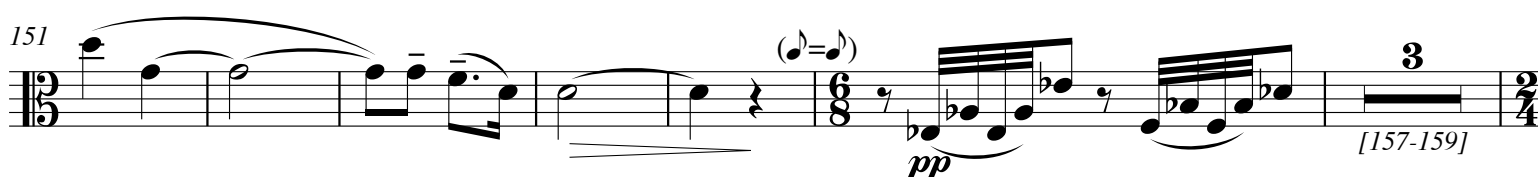
135



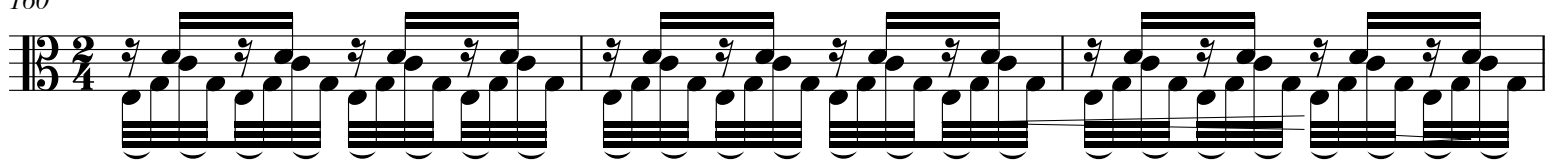
143



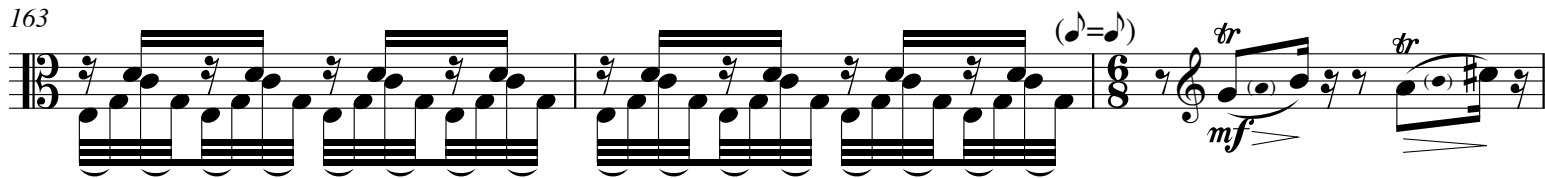
151



160



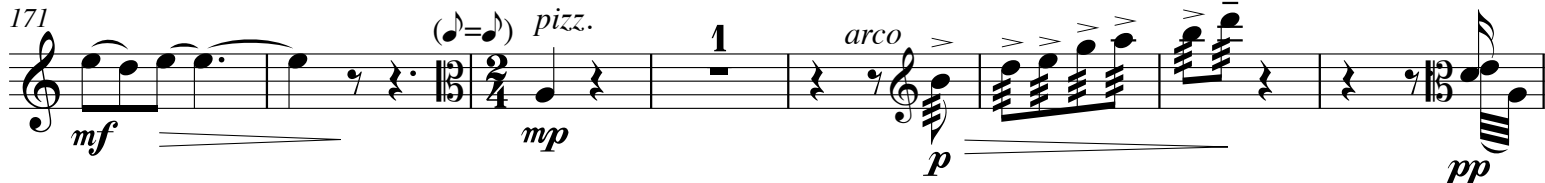
163



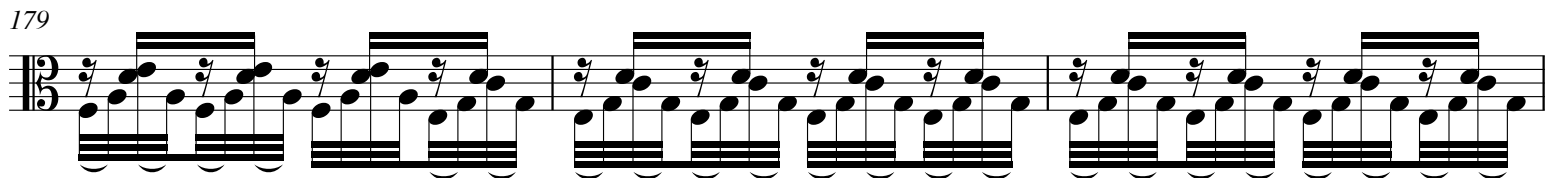
166



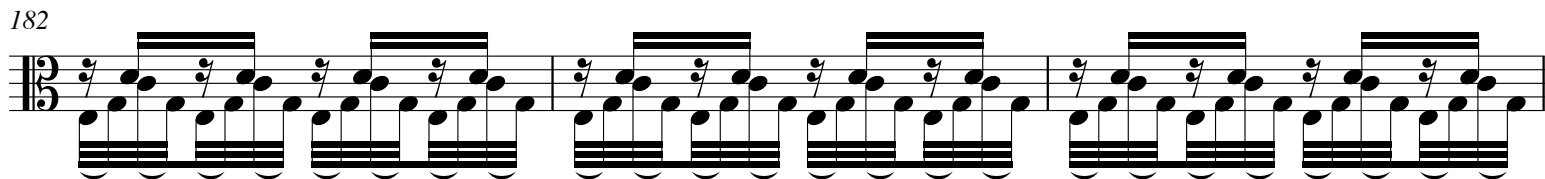
171



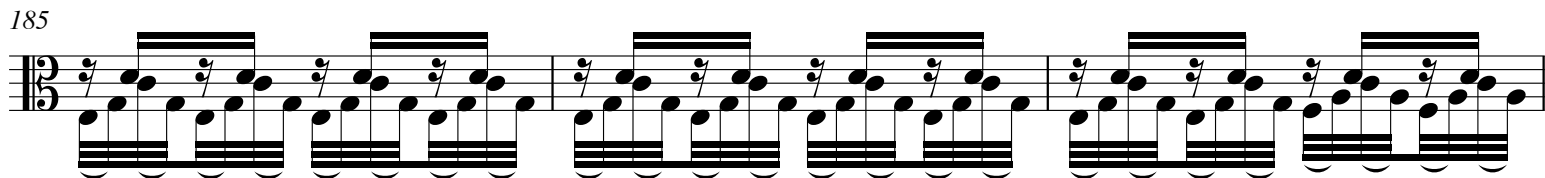
179



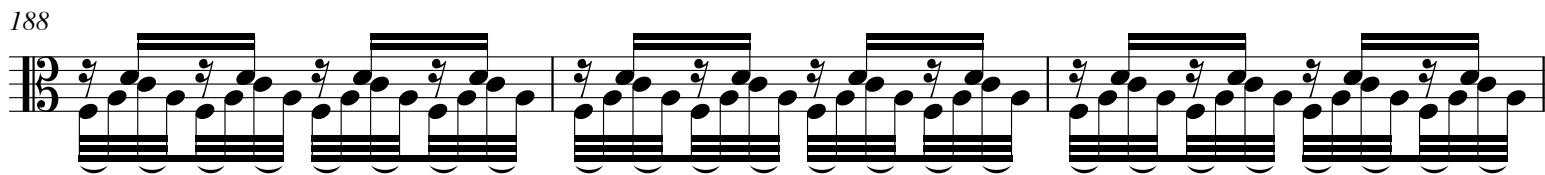
182



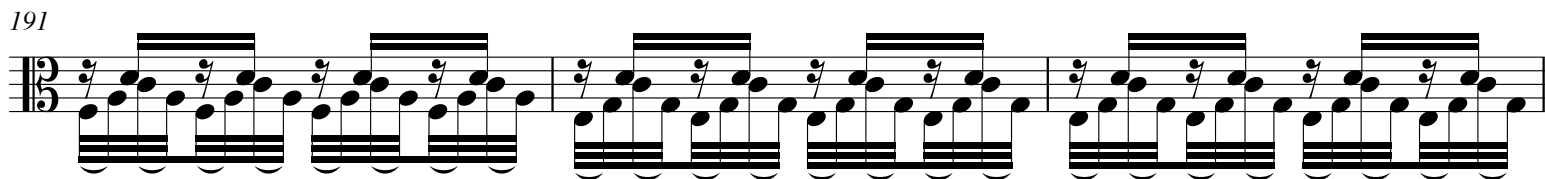
185



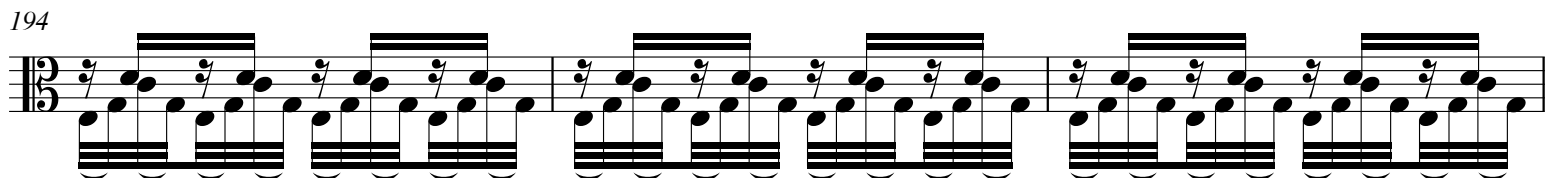
188



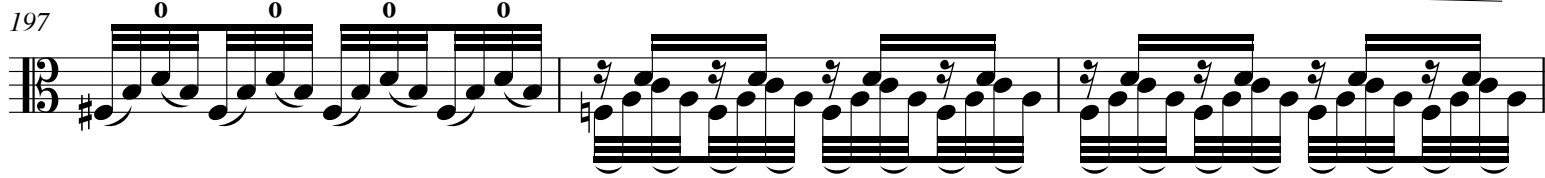
191



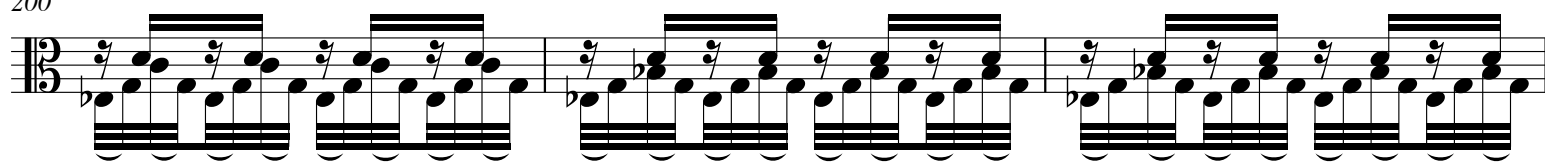
194



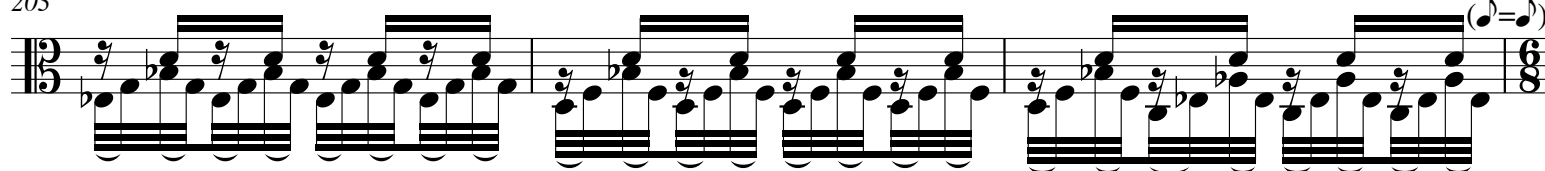
197



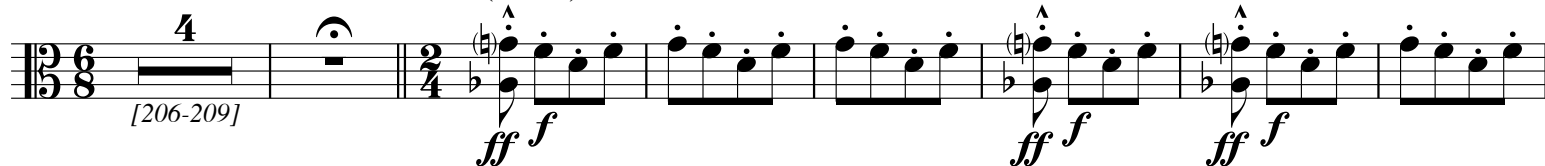
200



203



Fast (♩=138)



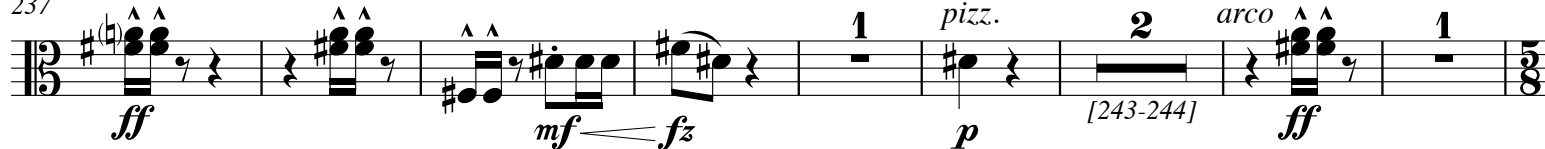
217



226



237



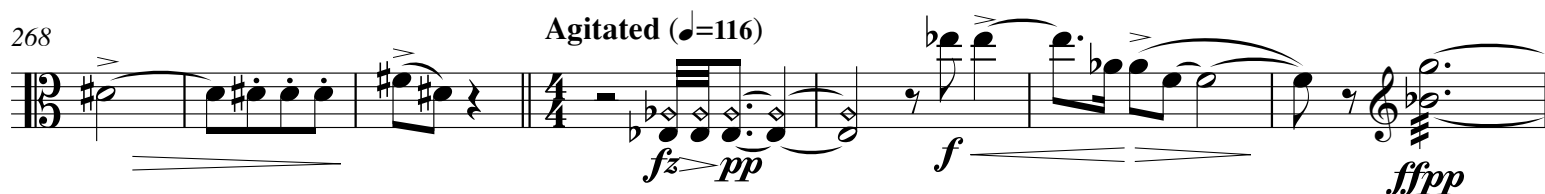
247



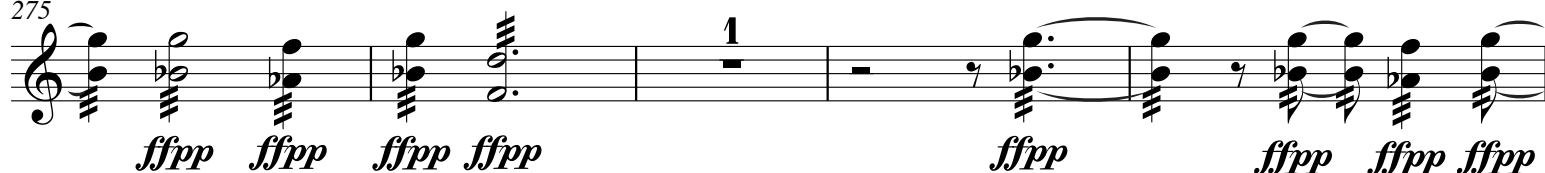
258



268



275



280



292 *Pno.* *pp* *sempre* *[297-299]* *pp* *sempre* *p* *espr.*

304 *pp* *sempre* *[310-314]* *G.P.* *Agitated* ( $\text{♩}=116$ ) *fz* *pp*

317 *Fast* ( $\text{♩}=138$ ) *[319-321]* *pp* *mf* *ff* *sempre* *(exactly in time)*

329

339 *ff* *ffz* *ffz* *ffz* *f*

347 *Pno.* *f* *mp*

357 *Grandiose* ( $\text{♩}=84$ ) *pp* *Pno.* *ff* *ff*

367 *fz* *ff* *Vln.*

373 *ff*

379 *Pno.* *ff* *dramatic*

386 *Introspective* ( $\text{♩}=66$ ) *pizz.* *Vlc.* *fz* *p* *fz* *p*

391 *fz* *p* *arco* *pp* [396-398]

399 *pizz.* *ppp* *fz* *p*

404 *fz* *p* *arco (freely)* *mp espr.* *pizz.* *ppp*

408 *fz* *p* *arco (freely)* *mp espr.*

414 *Pno.* *pizz.* *fz* *p* *fz* *p*

417 *fz* *p* *fz* *p* *arco* *mp cant.*

421 *mf*

426 *f*

430

435 *pizz.* *fz* *p* *fz*

440 *p* *Pno.* *fz* *p* *arco* *p*

445 *pizz.* *fz* *p* *arco* *pp* *p*